

# HSE 방폭용 솔레노이드 밸브(2-WAY N/C TYPE)

## Explosion proof solenoid valve

Certification No. 18-GA2BO-0122X

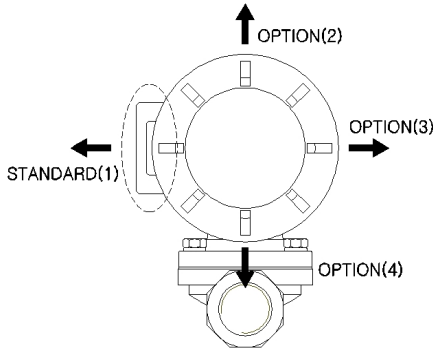
Exd mb IIC T4 IP67



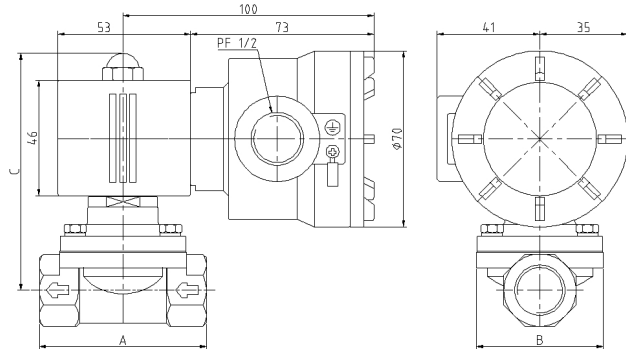
### □ 형식(MODEL) : 방폭코일 S-TYPE

MODEL NO.	VOLTAGE	Hz	WATTAGE	REMARK
HSA-221460	AC 220V	60Hz	14±10%	STANDARD
HSA-221450	AC 220V	50Hz	14±10%	OPTION
HSA-241450	AC 240V	50Hz	14±10%	OPTION
HSA-111460	AC 110V	60Hz	14±10%	OPTION
HSA-101450	AC 100V	50Hz	14±10%	OPTION
HSD-024140	DC 24V	-	14±10%	STANDARD
HSD-110140	DC 110V	-	14±10%	OPTION
HSD-125140	DC 125V	-	14±10%	OPTION

### □ CABLE CONNECTION LINE



### □ 외형도(DIMENSIONS)



### □ 적용품목(APPLICATION MODEL)

MODEL	A	B	C	BODY TYPE	PT(Rc) SIZE	PRESSURE	BODY MAT'L
HDW 021-EX	40	27.5	80	SCREW	PT(Rc)1/8"	0~20Kgf/cm <sup>2</sup>	BRASS
HDW 022-EX	40	27.5	80	SCREW	PT(Rc)1/4"	0~20Kgf/cm <sup>2</sup>	BRASS
HDW 042-EX	42	28	82	SCREW	PT(Rc)1/4"	0~10Kgf/cm <sup>2</sup>	BRASS
HDW 043-EX	42	28	82	SCREW	PT(Rc)3/8"	0~10Kgf/cm <sup>2</sup>	BRASS
HDW 154-EX	66	50	98	SCREW	PT(Rc)1/2"	0.3~10Kgf/cm <sup>2</sup>	BRASS
HAW 154-EX	53	29.5	82	SCREW	PT(Rc)1/2"	0~10Kgf/cm <sup>2</sup>	BRASS
HPW 102-EX	50	37	90	SCREW	PT(Rc)1/4"	0~10Kgf/cm <sup>2</sup>	BRASS
HPW 103-EX	50	37	90	SCREW	PT(Rc)3/8"	0~10Kgf/cm <sup>2</sup>	BRASS
HPW 154-EX	66	50	92	SCREW	PT(Rc)1/2"	0~10Kgf/cm <sup>2</sup>	BRASS
HPW 206-EX	92	65.5	100	SCREW	PT(Rc)3/4"	0~10Kgf/cm <sup>2</sup>	BRASS
HPW 2510-EX	92	64.5	104	SCREW	PT(Rc)1"	0~10Kgf/cm <sup>2</sup>	BRASS
HPW 3212-EX	122	86	119	SCREW	PT(Rc)1 1/4"	0.3~10Kgf/cm <sup>2</sup>	BRASS
HPW 4014-EX	122	86	121	SCREW	PT(Rc)1 1/2"	0.3~10Kgf/cm <sup>2</sup>	BRASS
HPW 5020-EX	140	100	129	SCREW	PT(Rc)2"	0.3~10Kgf/cm <sup>2</sup>	BRASS
HPW 6524-EX	166	153	156.5	SCREW	PT(Rc)2 1/2"	0.5~10Kgf/cm <sup>2</sup>	BRASS
HPW 103S-EX	70	56	97	SCREW	PT(Rc)3/8"	0~10Kgf/cm <sup>2</sup>	STS
HPW 154S-EX	70	56	97	SCREW	PT(Rc)1/2"	0~10Kgf/cm <sup>2</sup>	STS
HPW 206S-EX	70	56	101	SCREW	PT(Rc)3/4"	0~10Kgf/cm <sup>2</sup>	STS
HPW 2510S-EX	70	56	101	SCREW	PT(Rc)1"	0~10Kgf/cm <sup>2</sup>	STS
HPW 103SC-EX	66.5	50	101	SCREW	PT(Rc)3/8"	0.3~10Kgf/cm <sup>2</sup>	STS
HPW 154SC-EX	66.5	50	101	SCREW	PT(Rc)1/2"	0.3~10Kgf/cm <sup>2</sup>	STS
HPW 206SC-EX	92	65	103.5	SCREW	PT(Rc)3/4"	0.3~10Kgf/cm <sup>2</sup>	STS
HPW 2510SC-EX	92	65	106.5	SCREW	PT(Rc)1"	0.5~10Kgf/cm <sup>2</sup>	STS
HDW 032S-EX	39	39	81	SCREW	PT(Rc)1/4"	0~20Kgf/cm <sup>2</sup>	STS
HDW 033S-EX	39	39	81	SCREW	PT(Rc)3/8"	0~20Kgf/cm <sup>2</sup>	STS
HVS 042-EX	39	39	78	SCREW	PT(Rc)1/4"	0~10Kgf/cm <sup>2</sup>	STS
HVS 043-EX	39	39	78	SCREW	PT(Rc)3/8"	0~10Kgf/cm <sup>2</sup>	STS
HSR 053S-EX	40	40	79	SCREW	PT(Rc)3/8"	0~5Kgf/cm <sup>2</sup>	STS
HSR 063S-EX	40	40	79	SCREW	PT(Rc)3/8"	0~5Kgf/cm <sup>2</sup>	STS
HSR 102P-EX	50	35	99	SCREW	PT(Rc)1/4"	0~10Kgf/cm <sup>2</sup>	STS
HSR 103P-EX	50	35	99	SCREW	PT(Rc)3/8"	0~10Kgf/cm <sup>2</sup>	STS
HSR 104P-EX	50	35	99	SCREW	PT(Rc)1/2"	0~10Kgf/cm <sup>2</sup>	STS
HDC 042-EX	35	35	78	SCREW	PT(Rc)1/4"	0~2.5Kgf/cm <sup>2</sup>	STS

\*기타사양은 HSE에 문의 요망, 도면치수 및 제품사양은 품질향상을 위해 변경될 수 있음

CONSULT WITH HSE ABOUT OTHER OPTION SPECIFICATIONS,

PRODUCT SPECIFICATION IS TO SUBJECT TO THE QUALITY ENHANCEMENT.